

EL-9950 upgrade manual

Nov.28, 2014

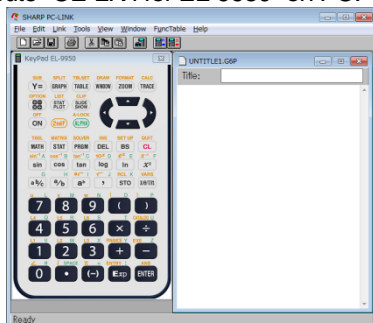
Upgrade to **ver1.2** from ver1.1 with CE-LK4.

Step1.

Connect cable (CE-LK4) to PC.

Step2.

Execute "CE-LK4 for EL-9950" on PC.

**Step3.**

Connect cable to EL-9950.

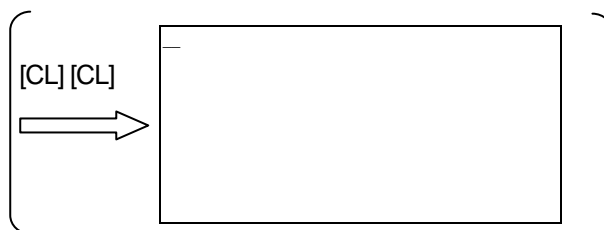
Step4.

Turn on EL-9950 and press  key.

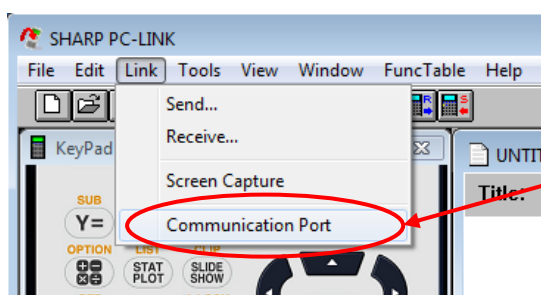
If the following screen is displayed, please press [CL] key twice on EL-9950.

```
PRESS [CL] KEY TO
CLEAR ALL DATA

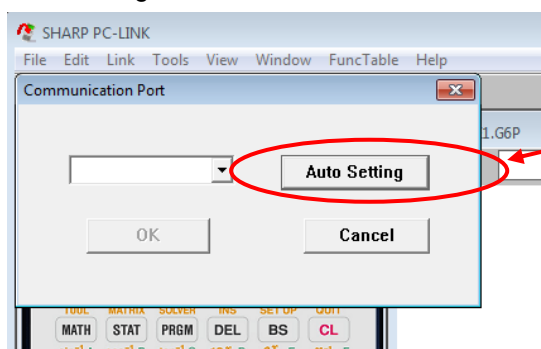
PRESS [ON] KEY TO
CANCEL
```

**Step5.**

Select "Communication Port" at Link menu.

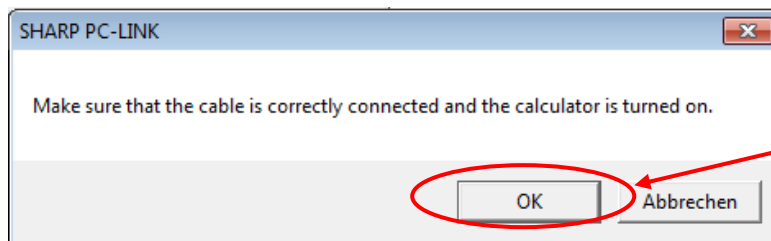
**Step6.**

Click "Auto Setting" button.

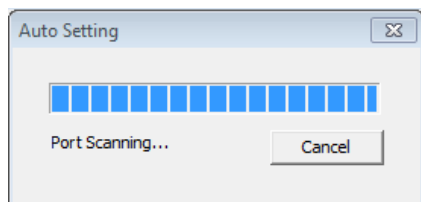


Step7.

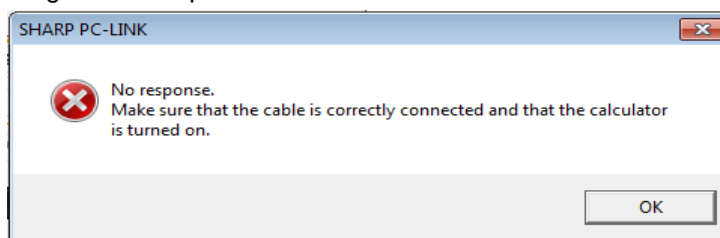
Click "OK" button.

**Step8.**

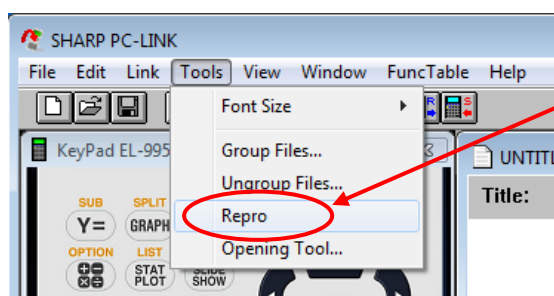
The following window is displayed. And a progress bar is extended. When setting is finished, the window is closed automatically.

**Note:**

If the following window "No response" is displayed, check whether a cable is connect properly. Then do it again from Step6.

**Sep9.**

Select "Repro" at Tools menu.

**Step10.**

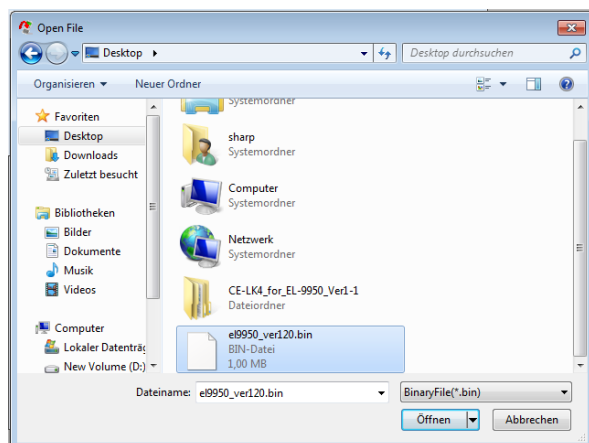
Click "Browse" button .

If "el9950_ver120.bin" is already selected, go to Step12.

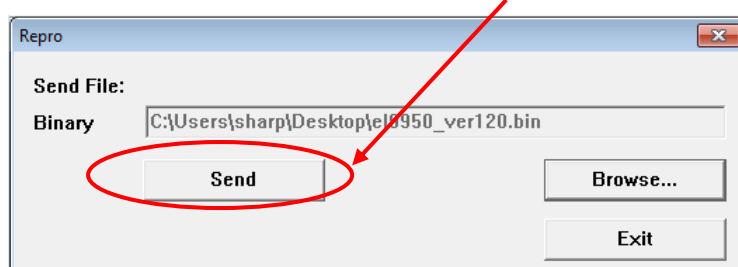


Step11.

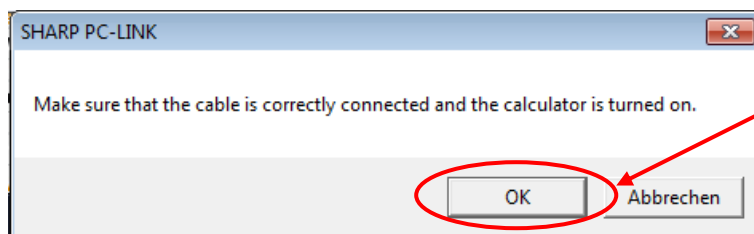
Select "e19950_ver120.bin"

**Step12.**

Click "Send" button.

**Step13.**

Click "OK" button.

**Step14.**

The following window is displayed.

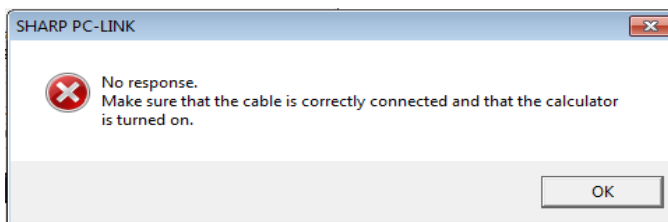


After 15seconds, the following screen is displayed on EL-9950.

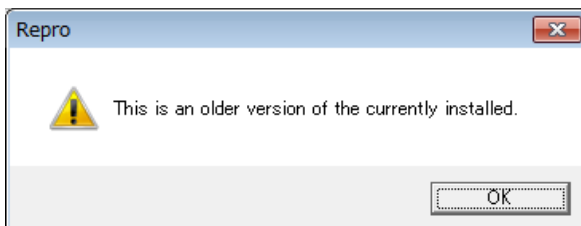


Note:

If the following window "No response" is displayed, check whether a cable is connect properly. Please carry out recovery operation(*1) of EL-9950. (Refer to APPENDIX)



If the following window "This is an older version...." is displayed, it is not necessary to upgrade. Because it is already ver1.2.



Step15.

A progress bar is extended.

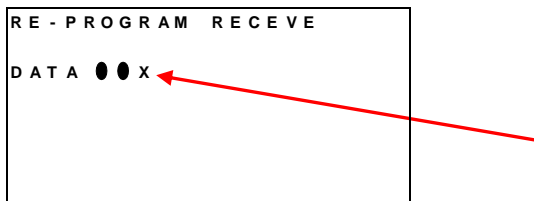


A black circle is indicated on EL-9950 during the transfer. After 30 seconds, the first circle is displayed. The total transfer time is about 4 minutes.



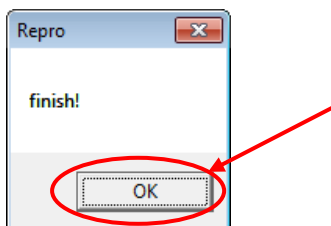
Note:

If "x" mark is indicated on EL-9950, Please carry out recovery operation(*1) of EL-9950. (Refer to APPENDIX)



Step16.

When transfer is finished, the following window is displayed. Click "OK" button. EL-9950 is turned off automatically



Step17.

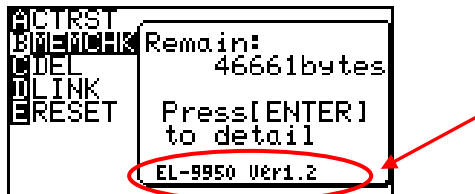
Remove the cable from EL-9950.

Step18.(Last)

Turn on EL-9950.

Press [2ndF][OPTION] and [cos] key, then the following screen is displayed.

Check name and version. (**EL-9950 Ver1.2**)

**APPENDIX**

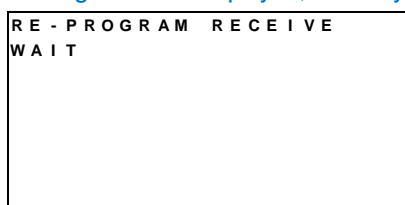
(*1) Recovery operation of EL-9950

Step A1.

Open and close the battery cover of EL-9950.

Step A2.

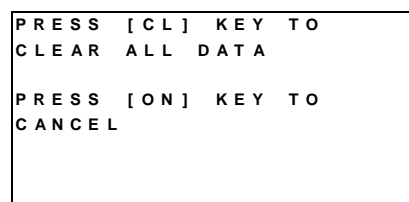
If the following screen is displayed, recovery is finished. Please go to Step12.



If it is not displayed even if it waits for 5 seconds, please turn on EL-9950.

Step A3.

If the following screen is displayed, please press [CL] key twice.

**Step A4.(Last)**

If the screen with only an underline is displayed, recovery is finished. Please go to Step12.

